



**Tai Sophia
Institute**

Serving the 7 Generations

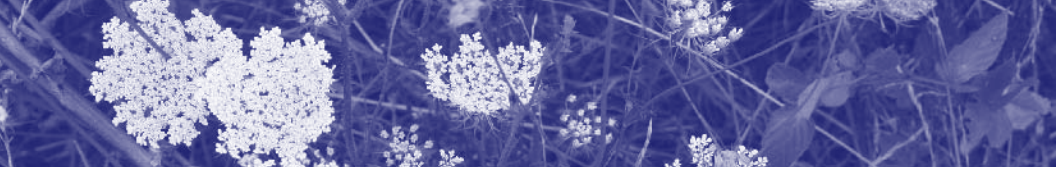
Treat the earth well:
It was not given to you by your parents;
it was loaned to you by your children.

-Ancient Indian Proverb



Tai Sophia Institute is the preeminent center for graduate education, patient care, and community service in integrative medicine in the Baltimore-Washington region. Four hundred and forty students are enrolled in three master's degree programs in acupuncture, herbal medicine, and the applied healing arts. Our network of clinical sites provides treatments, consultations, and free community health programs to more than 35,500 clients every year. Another 2,500 members of our community at large come to Tai Sophia for continuing professional education and wellness workshops.

Annual Fund 2008/2009



Annual Fund Benefits

Names given to levels of support are taken from herbs and acupuncture points.

Abundant Splendor Society (\$25,000 and above)

Abundant Splendor Society supporters provide a strong basis for our ambitious academic and community wellness initiatives.

- Private dinner with Robert Duggan or Dianne Connelly, Co-Founders of Tai Sophia Institute
- Exclusive listing in Tai Sophia's *Report* and on appreciation banner on campus and at clinical sites

plus all benefits below

True Unicorn (\$10,000 - \$24,999)

Gifts at the True Unicorn level help operate our network of community clinical sites, and make possible free addiction recovery and wellness programs for clients who otherwise would not be able to afford integrative medicine services.

- A custom Tai Sophia Q-Link pendant
- Invitation to a personal tour of the Tai Sophia clinical site of your choice
- Complimentary wellness consultation for up to five friends or family members

plus all benefits below

Great Esteem (\$5,000 - \$9,999)

Gifts at the Great Esteem level help us bridge the gap between a student's tuition and the actual cost of a student's education in Tai Sophia's Acupuncture, Herbal Medicine, and Applied Healing Arts programs.

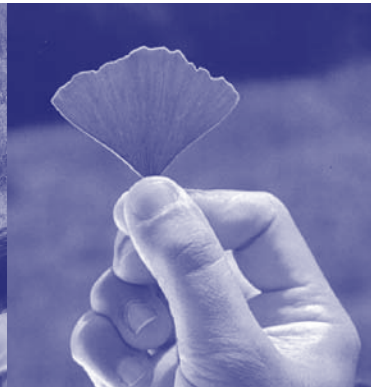
- Invitation to a personal tour of our campus with Barbara Ellrich, CEO of the Graduate School
- Copy of the winner of Tai Sophia's "Book of the Year" award

plus all benefits below

Eyebright (\$2,500 - \$4,999)

- Complimentary wellness consultation for two friends or family members
- 10% discount for continuing education classes

plus all benefits below





A Bow of Respect

Prosperous Gate (\$1,000 - \$2,499 or \$84+ monthly)

- Invitation to Annual Herb Walk through James Duke's "Green Farmacy" in Fulton, Maryland, led by Dr. Duke, and to the reception following the walk
- Invitations to visit national integrative medicine conferences with Tai Sophia staff plus all benefits below

Passionflower (\$500 - \$999 or \$42+ monthly)

- Invitation to witness "The Clinical Observation Class" taught by Founder and President Robert Duggan
- 10% discount for Redefining Health, Tai Sophia's signature two-day program that has changed the lives of participants from across the nation and around the globe plus all benefits below

Gate of Hope (\$250 - \$499 or \$21+ monthly)

- Invitation to Tai Sophia Open House and Campus Herb Walk
 - 25% discount at the Meeting Point Bookstore-Café
- plus all benefits below

Shepherd's Purse (\$100 - \$249 or \$9+ monthly)

- Invitations to distinguished lectures, free introductory programs, and evening presentations
 - Recognition in Tai Sophia's *Report*
- plus benefit below

Bubbling Spring (\$35 - \$99)

- Subscription to the *Pulse*, Tai Sophia's catalog of workshops and resources



Our programs supported by your contributions:

Learning from Ancient Wisdom — Academic Programs

Tai Sophia Institute offers the first accredited Master of Acupuncture program in the U.S., the nation's first and only M.S. in Herbal Medicine, and a leading-edge M.A. in Applied Healing Arts for healthcare professionals, business executives, and community leaders. Our programs draw people from around the world who are seeking a unique education based on the timeless wisdom of nature, ancient healing traditions, and modern science. Students are engaged in a cohort learning community with distinguished faculty and renowned guest lecturers.

Connecting Health and Healing — Clinical Centers

Through our Clinical Service Centers in the Baltimore-Washington region, we offer more than 35 years of experience in delivering relationship-centered care in integrative medicine and the healing arts. We are dedicated to serving individuals who seek to learn the art of caring for themselves and each other and to explore the abundant opportunities for growth and renewal.

Bringing Wellness to Patients — Community Outreach

In 1993, faculty, students, and alumni of Tai Sophia developed the Community Health Initiative (CHI) to bring integrative medicine to individuals who are unable to afford wellness services and, in particular, to serve individuals in recovery from addictions. Our Penn North Neighborhood Center in Baltimore City offers detox and full-body acupuncture, massage, and movement classes, and coaching about herbs, nutrition, parenting, and more – free of charge. Similar services are provided at 10 additional clinical sites throughout Maryland.

Offering a National Resource — Pioneers in Integrative Medicine

Since its founding as one of the first small healing arts clinics in the U.S. in 1975, Tai Sophia Institute has pioneered a courageous path for combining ancient healing traditions from the East and West:

- First to host a conference of American acupuncturists in 1981 gathering future leaders and launching major developments in the field.
- First to receive national accreditation of its Master of Acupuncture program in 1985.
- First to commission a research project into the nationwide use and health impact of acupuncture.
- First to explore research into integrative medicine with Johns Hopkins Medical Center in 1994.
- First to offer an M.S. in Herbal Medicine in 2001.

Tai Sophia Institute
Office of Advancement
7750 Montpelier Road, Laurel, MD 20723
410-888-9048 ext. 6641
www.tai.edu